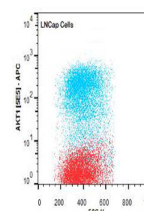


## Product Datasheet

# AKT1 (MOUSE) Allophycocyanin Conjugated Monoclonal Antibody GRP2249

<b>Description</b>	Anti-AKT1 (MOUSE) Allophycocyanin Conjugated Monoclonal Antibody
<b>Species/Host</b>	Mouse
<b>Reactivity</b>	Human, Mouse, Rat
<b>Conjugation</b>	APC
<b>Tested Applications</b>	ELISA, FC, IF, IHC-P, WB
<b>Form/Appearance</b>	0.02 M Potassium Phosphate, 0.5 M Sodium Chloride, pH 7.2
<b>Concentration</b>	1.0 mg/mL
<b>Note</b>	For research use only.
<b>Isotype</b>	IgG2a
<b>Clonality</b>	Monoclonal
<b>Source</b>	Anti-AKT1 Antibody was produced in mice by repeated immunizations with a synthetic peptide corresponding to internal residues of human AKT1 protein followed by monoclonal development.
<b>Clone ID</b>	5E5.F5.D7
<b>Uniprot ID</b>	<b>P31749</b>
<b>Entrez</b>	<b>208</b>
<b>Dilution Range</b>	ELISA: User Optimized, Flow Cytometry: 1.0 µg /mL, Fluorochrome: 1-2, Immunochemistry: User optimized, IF Microscopy: User optimized, Western Blot: User Optimized



Flow Cytometry of Mouse anti-AKT1 APC