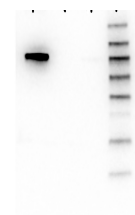


Product Datasheet

AKT1 (MOUSE) Fluorescein Conjugated Monoclonal Antibody GRP2212

| | |
|----------------------------|---|
| Description | Anti-AKT1 (MOUSE) Fluorescein Conjugated Monoclonal Antibody |
| Species/Host | Mouse |
| Reactivity | Human, Mouse, Rat |
| Conjugation | FITC |
| Tested Applications | ELISA, FC, IF, IHC-P, WB |
| Form/Appearance | 0.02 M Potassium Phosphate, 0.5 M Sodium Chloride, pH 7.2 |
| Concentration | 1.0 mg/mL |
| Note | For research use only. |
| Isotype | IgG2a |
| Clonality | Monoclonal |
| Source | Anti-AKT1 Antibody was produced in mice by repeated immunizations with a synthetic peptide corresponding to internal residues of human AKT1 protein followed by monoclonal development. |
| Clone ID | 5E5.F5.D7 |
| Uniprot ID | P31749 |
| Entrez | 208 |
| Dilution Range | ELISA: User Optimized, Flow Cytometry: User Optimized, Fluorochrome: 1-2, Immunochemistry: User optimized, IF Microscopy: User optimized, Western Blot: User Optimized |



Western Blot - Mouse anti-AKT1