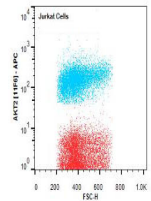


Product Datasheet

AKT2 (RAT) Allophycocyanin Conjugated Monoclonal Antibody GRP2724

| | |
|----------------------------|--|
| Description | Anti-AKT2 (RAT) Allophycocyanin Conjugated Monoclonal Antibody |
| Species/Host | Rat |
| Reactivity | Human |
| Conjugation | APC |
| Tested Applications | ELISA, FC, IF, IHC-P, WB |
| Form/Appearance | 0.02 M Potassium Phosphate, 0.5 M Sodium Chloride, pH 7.2 |
| Concentration | 1.0 mg/mL |
| Note | For research use only. |
| Isotype | IgG2a |
| Clonality | Monoclonal |
| Source | Anti-AKT2 Antibody was produced in rat by repeated immunizations with a synthetic peptide corresponding to internal residues of human AKT2 protein. |
| Clone ID | 11F6.B2 |
| Uniprot ID | P31751 |
| Entrez | 10000 |
| Dilution Range | ELISA: User Optimized, Flow Cytometry: User Optimized, Fluorochrome: 1-2, Immunocytochemistry: User optimized, IF Microscopy: User optimized, Western Blot: User Optimized |



Flow Cytometry of Rat anti-AKT2 antibody.