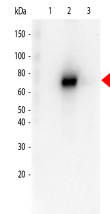


Product Datasheet

AKT2 (RAT) Monoclonal Antibody GRP2711

| | |
|----------------------------|--|
| Description | Anti-AKT2 (RAT) Monoclonal Antibody |
| Species/Host | Rat |
| Reactivity | Human |
| Conjugation | Unconjugated |
| Tested Applications | ELISA, FC, IHC-P, WB |
| Form/Appearance | 0.02 M Potassium Phosphate, 0.15 M Sodium Chloride, pH 7.2 |
| Concentration | 1mg/ml |
| Note | For research use only. |
| Isotype | IgG2a |
| Clonality | Monoclonal |
| Source | Anti-AKT2 Antibody was produced by repeated immunizations with a synthetic peptide corresponding to internal residues of human AKT2 protein. |
| Clone ID | 16G11.E8 |
| Uniprot ID | P31751 |
| Entrez | 10000 |
| Dilution Range | ELISA: 1:2,000 - 1:10,000, Flow Cytometry: User Optimized, Immunochemistry: 20 µg /mL, Western Blot: 1:500-1:2000 |



AKT2 Monoclonal Antibody
Western Blot