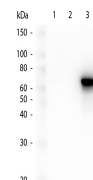


## Product Datasheet

### AKT3 (MOUSE) Monoclonal Antibody GRP2129

<b>Description</b>	Anti-AKT3 (MOUSE) Monoclonal Antibody
<b>Species/Host</b>	Mouse
<b>Reactivity</b>	Human, Mouse
<b>Conjugation</b>	Unconjugated
<b>Tested Applications</b>	ELISA, FC, IHC-P, WB
<b>Form/Appearance</b>	0.02 M Potassium Phosphate, 0.15 M Sodium Chloride, pH 7.2
<b>Concentration</b>	1.0 mg/ml
<b>Note</b>	For research use only.
<b>Isotype</b>	IgG1
<b>Clonality</b>	Monoclonal
<b>Source</b>	Anti-AKT3 Antibody was produced in mice by repeated immunizations with a synthetic peptide corresponding to internal residues of human AKT3 protein.
<b>Clone ID</b>	25F6.F6.D8
<b>Uniprot ID</b>	<a href="#">Q9Y243</a>
<b>Entrez</b>	<a href="#">2875</a>
<b>Dilution Range</b>	ELISA: 1:2,000 - 1:10,000, Flow Cytometry: User Optimized, Immunocytochemistry: 20 µg /mL, Western Blot: 1:500-1:2000



AKT3 Monoclonal Antibody  
Western Blot