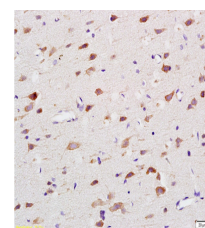


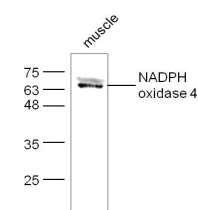
Product Datasheet

NADPH oxidase 4 Polyclonal Antibody GRP348

Description	Constitutive NADPH oxidase which generates superoxide intracellularly upon formation of a complex with CYBA/p22phox. Regulates signaling cascades probably through phosphatases inhibition. May function as an oxygen sensor regulating the KCNK3/TASK-1 potassium channel and HIF1A activity. May regulate insulin signaling cascade. May play a role in apoptosis, bone resorption and lipolysaccharide-mediated activation of NFkB.
Species/Host	Rabbit
Reactivity	Human, Mouse, Rat, Dog
Conjugation	Unconjugated
Tested Applications	IHC-P, WB
Immunogen	KLH conjugated synthetic peptide derived from mouse Nox-4 (public_immunogen_range: 84-105/578)
Form/Appearance	Aqueous buffered solution containing 1% BSA, 50% glycerol and 0.09% sodium azide.
Concentration	1ug/ul
Storage	Store at -20°C for 12 months.
Note	For research use only.
Isotype	IgG
Clonality	Polyclonal
Purity	Purified by Protein A.
Uniprot ID	Q9JH18
Entrez	50490
Dilution Range	WB: 1:300-1000, IHC-P: 1:200-400



WB of GRP348



IHC-P of GRP348