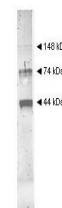


Product Datasheet

ALCOHOL DEHYDROGENASE (Yeast) (RABBIT) Antibody GRP1629

Species/Host	Rabbit
Reactivity	Fungi
Conjugation	Unconjugated
Tested Applications	ELISA, IP, WB
Form/Appearance	0.02 M Potassium Phosphate, 0.15 M Sodium Chloride, pH 7.2
Concentration	90 mg/mL
Note	For research use only.
Isotype	Antiserum
Clonality	Polyclonal
Source	This antibody was prepared from whole rabbit serum produced by repeated immunizations with full length Alcohol Dehydrogenase isolated from yeast.
Uniprot ID	P00330
Entrez	100009055
Dilution Range	ELISA: 1:5,000 - 1:25,000, Immunoprecipitation: 1:100, Western Blot: 1:500 - 1:2,000
Application Notes	This antibody has been tested for use in ELISA and by western blot.



Anti-Alcohol
Dehydrogenase
Antibody - Western Blot