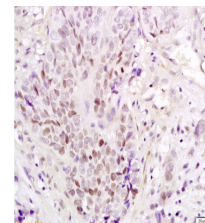


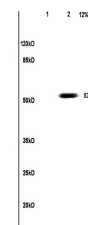
Product Datasheet

PAX3 Polyclonal Antibody GRP350

Description	Transcription factor that may regulate cell proliferation, migration and apoptosis. Involved in neural development and myogenesis.
Species/Host	Rabbit
Reactivity	Human, Mouse, Rat
Conjugation	Unconjugated
Tested Applications	IHC-P, WB
Immunogen	KLH conjugated synthetic peptide derived from mouse PAX3 (public_immunogen_range: 150-200/479)
Form/Appearance	Aqueous buffered solution containing 1% BSA, 50% glycerol and 0.09% sodium azide.
Concentration	1ug/ul
Storage	Store at -20°C for 12 months.
Note	For research use only.
Isotype	IgG
Clonality	Polyclonal
Purity	Purified by Protein A.
Uniprot ID	P24610
Entrez	18505
Dilution Range	WB: 1:300-1000, IHC-P: 1:200-400



WB of GRP350



IHC-P of GRP350