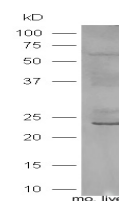


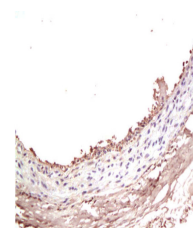
Product Datasheet

SGLT1 Polyclonal Antibody GRP356

Description	Actively transports glucose into cells by Na(+) cotransport with a Na(+) to glucose coupling ratio of 2:1. Efficient substrate transport in mammalian kidney is provided by the concerted action of a low affinity high capacity and a high affinity low capacity Na(+)/glucose cotransporter arranged in series along kidney proximal tubules.
Species/Host	Rabbit
Reactivity	Human, Mouse, Rat, Dog
Conjugation	Unconjugated
Tested Applications	IHC-P, WB
Immunogen	KLH conjugated synthetic peptide derived from mouse SGLT1 (public_immunogen_range: 402-423/665)
Form/Appearance	Aqueous buffered solution containing 1% BSA, 50% glycerol and 0.09% sodium azide.
Concentration	1ug/ul
Storage	Store at -20°C for 12 months.
Note	For research use only.
Isotype	IgG
Clonality	Polyclonal
Purity	Purified by Protein A.
Uniprot ID	Q8C3K6
Entrez	20537
Dilution Range	WB: 1:300-1000, IHC-P: 1:200-400



WB of GRP356



IHC-P of GRP356