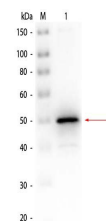


Product Datasheet

ALKALINE PHOSPHATASE (E.coli) (RABBIT) Antibody Biotin Conjugated GRP2630

Description	Anti-ALKALINE PHOSPHATASE (E.coli) (RABBIT) Antibody Biotin Conjugated
Species/Host	Rabbit
Reactivity	Bacteria
Conjugation	Biotin
Tested Applications	ELISA, WB
Form/Appearance	0.02 M Potassium Phosphate, 0.15 M Sodium Chloride, pH 7.2
Concentration	1.0 mg/mL
Note	For research use only.
Isotype	IgG
Clonality	Polyclonal
Source	Alkaline Phosphatase [E.coli]
Uniprot ID	P00634
Entrez	7849308
Dilution Range	ELISA: 1:4,000 - 1:20,000,Western Blot: 1:500 - 1:2,000



Alkaline Phosphatase (E. Coli)
Antibody Biotin Conjugated
-
Western Blot