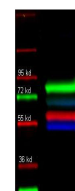


Product Datasheet

ALPHA-1-TRYPSIN (Human Plasma) (GOAT) Antibody GRP1450

Species/Host	Goat
Reactivity	Human
Conjugation	Unconjugated
Tested Applications	ELISA, IHC-P, WB
Form/Appearance	0.02 M Potassium Phosphate, 0.15 M Sodium Chloride, pH 7.2
Concentration	90 mg/mL
Note	For research use only.
Isotype	Antiserum
Clonality	Polyclonal
Source	a1-Anti-Trypsin [Human Plasma]
Uniprot ID	P01009
Entrez	11600
Dilution Range	ELISA: 1:20,000 - 1:100,000,Immunochemistry: 1:500 - 1:2,500,Western Blot: 1:2,000 - 1:10,000



Alpha 1 anti trypsin
antibody-Fluorescent
western
blot