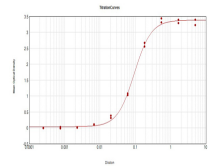


## Product Datasheet

# ALPHA-TUBULIN (RABBIT) Antibody Biotin Conjugated GRP4064

<b>Description</b>	Anti-ALPHA-TUBULIN (RABBIT) Antibody Biotin Conjugated
<b>Species/Host</b>	Rabbit
<b>Reactivity</b>	Human, Mouse, Rat, Bovine, Sheep, Chicken, Goat
<b>Conjugation</b>	Biotin
<b>Tested Applications</b>	ELISA, IF, IHC-P, WB
<b>Form/Appearance</b>	0.02 M Potassium Phosphate, 0.15 M Sodium Chloride, pH 7.2
<b>Concentration</b>	0.61 mg/ml
<b>Note</b>	For research use only.
<b>Isotype</b>	IgG
<b>Clonality</b>	Polyclonal
<b>Source</b>	Anti-Tubulin Loading Control Antibody was prepared from whole rabbit serum produced by repeated immunizations with a synthetic peptide corresponding to the C-Terminal region near amino acids 425-451 of Human alpha Tubulin.
<b>Uniprot ID</b>	<b>P68363</b>
<b>Entrez</b>	<b>338</b>
<b>Dilution Range</b>	ELISA: 1:20,000-1:100,000,Immunochemistry: 1:1,000-1:5,000,IF Microscopy: 1:500 - 1:2,000,Western Blot: 1:2,000-1:10,000



ELISA Results of Rabbit  
Anti-Alpha Tubulin  
Antibody  
Biotin Conjugated