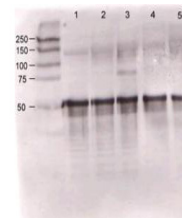


## Product Datasheet

### Angiopoietin 1 (RABBIT) Antibody GRP1537

<b>Species/Host</b>	Rabbit
<b>Reactivity</b>	Human, Mouse
<b>Conjugation</b>	Unconjugated
<b>Tested Applications</b>	ELISA, IHC-P, IP, WB
<b>Form/Appearance</b>	0.02 M Potassium Phosphate, 0.15 M Sodium Chloride, pH 7.2
<b>Concentration</b>	80 mg/mL
<b>Note</b>	For research use only.
<b>Isotype</b>	Antiserum
<b>Clonality</b>	Polyclonal
<b>Uniprot ID</b>	<b>O08538</b>
<b>Entrez</b>	<b>345</b>
<b>Dilution Range</b>	ELISA: 1:5,000 - 1:25,000, Immunochemistry: 1:200-1:800, Immunoprecipitation: User Optimized, Western Blot: 1:500-1:2,000



Anti-Ang-1 Antibody -  
Western  
Blot