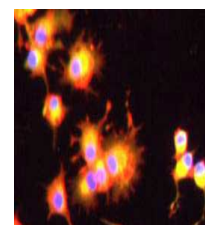


Product Datasheet

Angiopoietin 2 (RABBIT) Antibody GRP1535

Species/Host	Rabbit
Reactivity	Human, Mouse
Conjugation	Unconjugated
Tested Applications	ELISA, IHC-P, IP, WB
Form/Appearance	0.02 M Potassium Phosphate, 0.15 M Sodium Chloride, pH 7.2
Concentration	80 mg/mL
Note	For research use only.
Isotype	Antiserum
Clonality	Polyclonal
Source	Anti-Angiopoietin 2 Antiserum was prepared by repeated immunizations with a synthetic peptide, corresponding to a region near the N-terminus of mouse angiopoietin-2 protein, conjugated to KLH using maleimide.
Uniprot ID	035608
Entrez	1191
Dilution Range	ELISA: 1:5,000 - 1:25,000,Immunochemistry: 1:200-1:500,Immunoprecipitation: user optimized,Western Blot: 1:500 - 1:2,000



ANG2 Antibody -
Immunocytochemistry