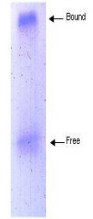


Product Datasheet

APOLIPOPROTEIN A-I (GOAT) Antibody GRP3258

Description	Anti-APOLIPOPROTEIN A-I (GOAT) Antibody
Species/Host	Goat
Reactivity	Human
Conjugation	Unconjugated
Tested Applications	ELISA, IHC-P, IP, WB
Form/Appearance	0.125 M Sodium Borate, 0.075 M Sodium Chloride, 0.005 M EDTA, pH 8.0
Concentration	1.0 mg/mL
Note	For research use only.
Isotype	IgG
Clonality	Polyclonal
Source	apoLipoprotein Type A-I was isolated from human plasma by density gradient centrifugation followed by HPLC purification, followed by repeated immunizations in goat.
Uniprot ID	P02647
Entrez	13196
Dilution Range	ELISA: 1:10,000 - 1:20,000,Immunochemistry: 1:50 - 1:200,Immunoprecipitation: 1:100,Western Blot: 1:1,000 - 1:2,000

Application Notes Anti-apoLipoprotein antibodies have been used for indirect trapping ELISA for quantitation of antigen in serum using a standard curve, for immunoprecipitation, immunohistochemistry and for western blotting for highly sensitive qualitative analysis.



Anti-APOA1 Antibody -
SDS-PAGE