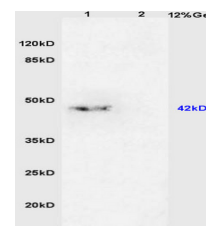


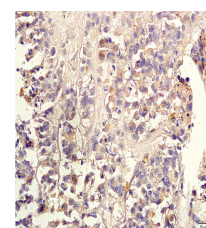
Product Datasheet

E-Selectin/CD62E Polyclonal Antibody GRP373

Description	Cell-surface glycoprotein having a role in immunoadhesion. Mediates in the adhesion of blood neutrophils in cytokine-activated endothelium through interaction with PSGL1/SELPLG. May have a role in capillary morphogenesis.
Species/Host	Rabbit
Reactivity	Human, Mouse, Rat, Rabbit
Conjugation	Unconjugated
Tested Applications	IHC-P, WB
Immunogen	KLH conjugated synthetic peptide derived from mouse E-Selectin (public_immunogen_range: 580-610/612)
Form/Appearance	Aqueous buffered solution containing 1% BSA, 50% glycerol and 0.09% sodium azide.
Concentration	1ug/ul
Storage	Store at -20°C for 12 months.
Note	For research use only.
Isotype	IgG
Clonality	Polyclonal
Purity	Purified by Protein A.
Uniprot ID	Q00690
Entrez	20339
Dilution Range	WB: 1:300-1000, IHC-P: 1:200-400



WB of GRP373



IHC-P of GRP373