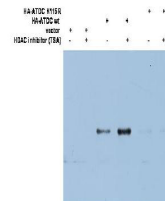


## Product Datasheet

### ATDC Ac-K116 (RABBIT) Antibody GRP3657

<b>Description</b>	Anti-ATDC Ac-K116 (RABBIT) Antibody
<b>Species/Host</b>	Rabbit
<b>Reactivity</b>	Human, Bovine, Primate, Horse
<b>Conjugation</b>	Unconjugated
<b>Tested Applications</b>	ELISA, WB
<b>Form/Appearance</b>	0.02 M Potassium Phosphate, 0.15 M Sodium Chloride, pH 7.2
<b>Concentration</b>	0.67 mg/mL
<b>Note</b>	For research use only.
<b>Isotype</b>	IgG
<b>Clonality</b>	Polyclonal
<b>Source</b>	This affinity purified antibody was prepared from whole rabbit serum produced by repeated immunizations with a peptide corresponding to an internal portion of human ATDC protein around lysine 116.
<b>Uniprot ID</b>	<a href="#">Q14134</a>
<b>Entrez</b>	<a href="#">1114041</a>
<b>Dilution Range</b>	ELISA: 1:100,000,Western Blot: 1:500 to 3,000



Anti-ATDC (Ac-K116)  
Antibody -  
Western Blot