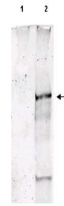


## Product Datasheet

### ATM Protein Kinase pS1981 (SHEEP) Antibody GRP4096

<b>Description</b>	Anti-ATM Protein Kinase pS1981 (SHEEP) Antibody
<b>Species/Host</b>	Sheep
<b>Reactivity</b>	Human
<b>Conjugation</b>	Unconjugated
<b>Tested Applications</b>	ELISA, WB
<b>Form/Appearance</b>	0.02 M Potassium Phosphate, 0.15 M Sodium Chloride, pH 7.2
<b>Concentration</b>	1.0 mg/mL
<b>Note</b>	For research use only.
<b>Isotype</b>	IgG
<b>Clonality</b>	Polyclonal
<b>Source</b>	This antibody was affinity purified from whole sheep serum prepared by repeated immunizations with a synthetic peptide corresponding to a region near serine 1981 of human ATM conjugated to KLH using maleimide.
<b>Uniprot ID</b>	<a href="#">Q13315</a>
<b>Entrez</b>	<a href="#">274</a>
<b>Dilution Range</b>	ELISA: 1:2,000 - 1:10,000, Western Blot: 1:500 - 1:2,000
<b>Application Notes</b>	Affinity purified sheep anti-ATM has been tested by ELISA and western blotting against native form phosphorylated ATM PK.



Anti-ATM pS1981 Antibody  
Western Blot