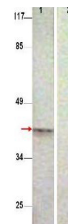


## Product Datasheet

### Aurora B pT232 (RABBIT) Antibody GRP3459

<b>Description</b>	Anti-Aurora B pT232 (RABBIT) Antibody
<b>Species/Host</b>	Rabbit
<b>Reactivity</b>	Human, Monkey
<b>Conjugation</b>	Unconjugated
<b>Tested Applications</b>	ELISA, IF, IHC-P, WB
<b>Form/Appearance</b>	0.02 M Potassium Phosphate, 0.15 M Sodium Chloride, pH 7.2
<b>Concentration</b>	0.87 mg/mL
<b>Note</b>	For research use only.
<b>Isotype</b>	IgG
<b>Clonality</b>	Polyclonal
<b>Source</b>	This affinity purified antibody was prepared from whole rabbit serum produced by repeated immunizations with a synthetic peptide corresponding to an internal region surrounding T232 of Human Aurora Kinase B protein.
<b>Uniprot ID</b>	<a href="#">Q96GD4</a>
<b>Entrez</b>	<a href="#">54841</a>
<b>Dilution Range</b>	ELISA: 1:10,000 - 1:30,000, Immunochemistry: User Optimized, IF Microscopy: User Optimized, Western Blot: 1:250 - 1:2,000



Anti-Aurora B pT232  
antibody -  
Western Blot