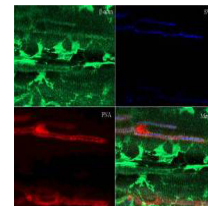


Product Datasheet

Beta Actin (RABBIT) Antibody GRP3511

Description	Anti-Beta Actin (RABBIT) Antibody
Species/Host	Rabbit
Reactivity	Human, Mouse, Frog
Conjugation	Unconjugated
Tested Applications	ELISA, IF, WB
Form/Appearance	0.02 M Potassium Phosphate, 0.15 M Sodium Chloride, pH 7.2
Concentration	1.0 mg/mL
Note	For research use only.
Isotype	IgG
Clonality	Polyclonal
Source	beta-Actin Loading Control Antibody was prepared from whole rabbit serum produced by repeated immunizations with a synthetic peptide corresponding to C-Terminal region near amino acids 350-375 of Human beta Actin.
Uniprot ID	P60709
Entrez	23397
Dilution Range	ELISA: 1:10,000 - 1:40,000,IF Microscopy: 1:500 - 1:2,000,Western Blot: 1:1,000 - 1:4,000



Anti-Beta Actin Antibody -
Immunohistochemistry