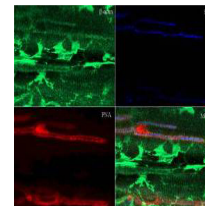


## Product Datasheet

### Beta Actin (RABBIT) Antibody GRP3512

<b>Description</b>	Anti-Beta Actin (RABBIT) Antibody
<b>Species/Host</b>	Rabbit
<b>Reactivity</b>	Human, Mouse, Frog
<b>Conjugation</b>	Unconjugated
<b>Tested Applications</b>	ELISA, IF, WB
<b>Form/Appearance</b>	0.02 M Potassium Phosphate, 0.15 M Sodium Chloride, pH 7.2
<b>Concentration</b>	1.0 mg/ml
<b>Note</b>	For research use only.
<b>Isotype</b>	IgG
<b>Clonality</b>	Polyclonal
<b>Source</b>	beta-Actin Loading Control Antibody was prepared from whole rabbit serum produced by repeated immunizations with a synthetic peptide corresponding to a C-Terminal region near amino acids 350-375 of Human beta Actin.
<b>Uniprot ID</b>	<b>P60709</b>
<b>Entrez</b>	<b>23397</b>
<b>Dilution Range</b>	ELISA: 1:10,000 - 1:40,000,IF Microscopy: 1:500 - 1:2,000,Western Blot: 1:1,000 - 1:4,000



Anti-Beta Actin Antibody -  
Immunohistochemistry