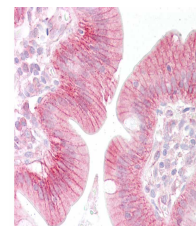


Product Datasheet

beta Catenin (RABBIT) Antibody GRP3707

Description	Anti-beta Catenin (RABBIT) Antibody
Species/Host	Rabbit
Reactivity	Human, Zebrafish
Conjugation	Unconjugated
Tested Applications	ELISA, IHC-P, WB
Form/Appearance	0.02 M Potassium Phosphate, 0.15 M Sodium Chloride, pH 7.2
Concentration	1.1 mg/mL
Note	For research use only.
Isotype	IgG
Clonality	Polyclonal
Source	beta catenin antibody was prepared from whole rabbit serum produced by repeated immunizations with a synthetic peptide corresponding to catenin beta-1 C-terminus.
Uniprot ID	F1QGH7
Entrez	759
Dilution Range	ELISA: 1:75,000 - 1:125,000,Immunochemistry: 5 - 10 ug/mL,Western Blot: 1:500



beta Catenin Antibody -
IHC