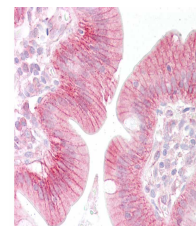


## Product Datasheet

### beta Catenin (RABBIT) Antibody GRP3708

<b>Description</b>	Anti-beta Catenin (RABBIT) Antibody
<b>Species/Host</b>	Rabbit
<b>Reactivity</b>	Human, Zebrafish
<b>Conjugation</b>	Unconjugated
<b>Tested Applications</b>	ELISA, IHC-P, WB
<b>Form/Appearance</b>	0.02 M Potassium Phosphate, 0.15 M Sodium Chloride, pH 7.2
<b>Concentration</b>	1.15 mg/mL
<b>Note</b>	For research use only.
<b>Isotype</b>	IgG
<b>Clonality</b>	Polyclonal
<b>Source</b>	beta catenin antibody was prepared from whole rabbit serum produced by repeated immunizations with a synthetic peptide corresponding to catenin beta-1 C-terminus.
<b>Uniprot ID</b>	<b>F1QGH7</b>
<b>Entrez</b>	<b>759</b>
<b>Dilution Range</b>	ELISA: 1:25000,Immunochemistry: 5 - 10 ug/mL,Western Blot: 1:500



beta Catenin Antibody –  
IHC