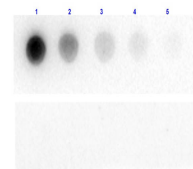


Product Datasheet

BETA GALACTOSIDASE (E.coli) (CHICKEN) Antibody GRP2774

Description	Anti-BETA GALACTOSIDASE (E.coli) (CHICKEN) Antibody
Species/Host	Chicken
Reactivity	Bacteria
Conjugation	Unconjugated
Tested Applications	ELISA, WB
Form/Appearance	0.02 M Potassium Phosphate, 0.15 M Sodium Chloride, pH 7.2
Concentration	1 mg/ml
Note	For research use only.
Isotype	IgY
Clonality	Polyclonal
Source	This IgY fraction antibody was prepared from eggs of chickens laid after repeated immunizations with full length native Beta Galactosidase isolated from E.coli
Uniprot ID	P00722
Entrez	760
Dilution Range	ELISA: 1:2,000-1:10,000, Western Blot: 1:2,000-1:10,000



Dot Blot of Chicken
Anti-Beta
Galactosidase Antibody.