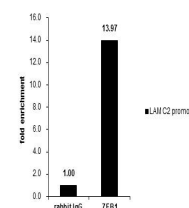


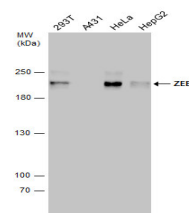
Product Datasheet

ZEB1 antibody [N2C1], Internal GRP38

Description	ZEB1 encodes a zinc finger transcription factor that represses T-lymphocyte-specific IL2 gene (MIM 147680) expression by binding to a negative regulatory domain 100 nucleotides 5-prime of the IL2 transcription start site (Williams et al., 1991 [PubMed 1840704]).[supplied by OMIM]
Species/Host	Rabbit
Reactivity	Human, Mouse
Conjugation	Unconjugated
Tested Applications	ChIP, ICC, IF, IP, WB
Immunogen	Recombinant protein encompassing a sequence within the center region of human ZEB1. The exact sequence is proprietary.
Form/Appearance	Liquid: 1XPBS, 20% Glycerol (pH7). 0.025% ProClin 300 was added as a preservative.
Concentration	0.1 mg/ml
Storage	Store as concentrated solution. Centrifuge briefly prior to opening vial. For short-term storage (1-2 weeks), store at 4°C. For long-term storage, aliquot and store at -20°C or below. Avoid multiple freeze-thaw cycles.
Note	For research use only.
Isotype	IgG
Clonality	Polyclonal
Purity	Purified by antigen-affinity chromatography.
Uniprot ID	P37275
Entrez	6935
Dilution Range	WB: 1:500-1:3000, ICC: 1:100-1:1000, IP: 1:100-1:500



Cross-linked ChIP was performed with HeLa chromatin extract and 5 µg of either control rabbit IgG or anti-ZEB1 antibody. The precipitated DNA was detected by PCR with primer set targeting to LAMC2 promoter.



Various whole cell extracts (30 µg) were separated by 5% SDS-PAGE, and the membrane was blotted with ZEB1 antibody [N2C1], Internal (GRP490) diluted at 1:1000. The HRP-conjugated anti-rabbit IgG antibody was used to detect the primary antibody.