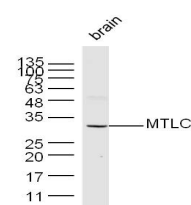


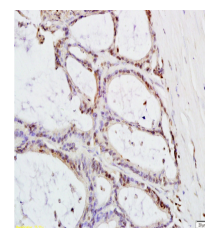
Product Datasheet

GnRHR Polyclonal Antibody GRP404

Description	Receptor for gonadotropin releasing hormone (GnRH) that mediates the action of GnRH to stimulate the secretion of the gonadotropic hormones luteinizing hormone (LH) and follicle-stimulating hormone (FSH). This receptor mediates its action by association with G-proteins that activate a phosphatidylinositol-calcium second messenger system. Isoform 2 may act as an inhibitor of GnRH-R signaling.
Species/Host	Rabbit
Reactivity	Human, Mouse, Rat, Goat
Conjugation	Unconjugated
Tested Applications	IHC-P, WB
Immunogen	KLH conjugated synthetic peptide derived from human GnRHR (public_immunogen_range: 233-281/328)
Form/Appearance	Aqueous buffered solution containing 1% BSA, 50% glycerol and 0.09% sodium azide.
Concentration	1ug/ul
Storage	Store at -20°C for 12 months.
Note	For research use only.
Isotype	IgG
Clonality	Polyclonal
Purity	Purified by Protein A.
Uniprot ID	P30968
Entrez	2798
Dilution Range	WB: 1:300-1000, IHC-P: 1:200-400



WB of GRP404



IHC-P of GRP404