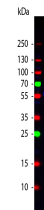


## Product Datasheet

# BIOTIN (RABBIT) Antibody Fluorescein Conjugated GRP3967

<b>Description</b>	Anti-BIOTIN (RABBIT) Antibody Fluorescein Conjugated
<b>Species/Host</b>	Rabbit
<b>Conjugation</b>	FITC
<b>Tested Applications</b>	IF
<b>Form/Appearance</b>	0.02 M Potassium Phosphate, 0.15 M Sodium Chloride, pH 7.2
<b>Concentration</b>	1.0 mg/mL
<b>Note</b>	For research use only.
<b>Isotype</b>	IgG
<b>Clonality</b>	Polyclonal
<b>Source</b>	Biotin conjugated to Keyhole Limpet Hemocyanin (KLH)
<b>Entrez</b>	<b>983</b>
<b>Dilution Range</b>	Fluorochrome: 2.8,IF Microscopy: 1:500-1:2,500



WB - Biotin Antibody  
Fluorescein Conjugated