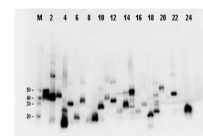


Product Datasheet

Antibody for the detection of conjugated proteins (MOUSE) Monoclonal Antibody GRP2060

Description	Antibody for the detection of conjugated proteins (MOUSE) Monoclonal Antibody
Species/Host	Mouse
Reactivity	Protein
Conjugation	Unconjugated
Tested Applications	ELISA, FC, IHC-P, WB
Form/Appearance	0.02 M Potassium Phosphate, 0.15 M Sodium Chloride, pH 7.2
Concentration	1.0 mg/mL
Note	For research use only.
Isotype	IgG2a
Clonality	Monoclonal
Clone ID	29E4.G7
Entrez	55166
Dilution Range	ELISA: 1:150,000 - 1:250,000, Flow Cytometry: User Optimized, Immunochemistry: User Optimized, Western Blot: 1:2,000 - 1:20,000



Western Blot-Monoclonal Antibody to detect FLAG™ conjugated proteins