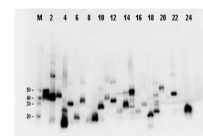


## Product Datasheet

### Antibody for the detection of conjugated proteins (MOUSE) Monoclonal Antibody GRP2097

<b>Description</b>	Antibody for the detection of conjugated proteins (MOUSE) Monoclonal Antibody
<b>Species/Host</b>	Mouse
<b>Reactivity</b>	Protein
<b>Conjugation</b>	Unconjugated
<b>Tested Applications</b>	ELISA, FC, IHC-P, WB
<b>Form/Appearance</b>	0.02 M Potassium Phosphate, 0.15 M Sodium Chloride, pH 7.2
<b>Concentration</b>	1.0 mg/ml
<b>Note</b>	For research use only.
<b>Isotype</b>	IgG2a
<b>Clonality</b>	Monoclonal
<b>Clone ID</b>	29E4.G7
<b>Entrez</b>	<b>55166</b>
<b>Dilution Range</b>	ELISA: 1:150,000 - 1:250,000, Flow Cytometry: User Optimized, Immunochemistry: 1:1,000-1:5,000, Western Blot: 1:2,000-1:10,000



Monoclonal Antibody to detect FLAG™ conjugated proteins - Western Blot