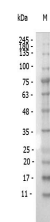


## Product Datasheet

### Antibody for the detection of conjugated proteins (MOUSE) Monoclonal Antibody Peroxidase Conjugated GRP2215

<b>Description</b>	Antibody for the detection of conjugated proteins (MOUSE) Monoclonal Antibody Peroxidase Conjugated
<b>Species/Host</b>	Mouse
<b>Reactivity</b>	Protein
<b>Conjugation</b>	HRP
<b>Tested Applications</b>	ELISA, IHC-P, WB
<b>Form/Appearance</b>	0.02 M Potassium Phosphate, 0.15 M Sodium Chloride, pH 7.2
<b>Concentration</b>	1.0 mg/mL
<b>Note</b>	For research use only.
<b>Isotype</b>	IgG2a
<b>Clonality</b>	Monoclonal
<b>Clone ID</b>	29E4.G7
<b>Entrez</b>	<b>396054</b>
<b>Dilution Range</b>	ELISA: 1:10,000-1:50,000,Immunochemistry: 1:500-1:2,500,Western Blot: 1:10,000



Mouse anti-FLAG HRP  
WB