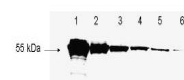


Product Datasheet

Antibody for the detection of conjugated proteins (RABBIT) GRP3390

Description	Antibody for the detection of conjugated proteins (RABBIT)
Species/Host	Rabbit
Reactivity	Protein
Conjugation	Unconjugated
Tested Applications	ELISA, IHC-P, WB
Form/Appearance	0.02 M Potassium Phosphate, 0.15 M Sodium Chloride, pH 7.2
Concentration	1.2mg/mL
Note	For research use only.
Isotype	IgG
Clonality	Polyclonal
Entrez	852577
Dilution Range	ELISA: 1:20,000 - 1:40,000,Immunochemistry: User Optimized,Western Blot: 1:2,000 - 1:10,000



Antibody for the detection of FLAG™ conjugated proteins - Western Blot