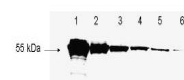


Product Datasheet

Antibody for the detection of conjugated proteins (RABBIT) GRP3391

Description	Antibody for the detection of conjugated proteins (RABBIT)
Species/Host	Rabbit
Reactivity	Protein
Conjugation	Unconjugated
Tested Applications	ELISA, IHC-P, WB
Form/Appearance	0.02 M Potassium Phosphate, 0.15 M Sodium Chloride, pH 7.2
Concentration	1.0 mg/mL
Note	For research use only.
Isotype	IgG
Clonality	Polyclonal
Entrez	852577
Dilution Range	ELISA: 1:90,000 - 1:250,000, Immunochemistry: User Optimized, Western Blot: 1:2,000 - 1:10,000



Antibody for the detection
of
FLAG™ conjugated
proteins -
Western Blot