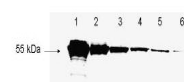


## Product Datasheet

### Antibody for the detection of conjugated proteins (RABBIT) Antibody Biotin Conjugated GRP4060

<b>Description</b>	Antibody for the detection of conjugated proteins (RABBIT) Antibody Biotin Conjugated
<b>Species/Host</b>	Rabbit
<b>Reactivity</b>	Protein
<b>Conjugation</b>	Biotin
<b>Tested Applications</b>	ELISA, IHC-P, WB
<b>Form/Appearance</b>	0.02 M Potassium Phosphate, 0.15 M Sodium Chloride, pH 7.2
<b>Concentration</b>	1.0 mg/mL
<b>Note</b>	For research use only.
<b>Isotype</b>	IgG
<b>Clonality</b>	Polyclonal
<b>Entrez</b>	<b>1215660</b>
<b>Dilution Range</b>	ELISA: 1:10,000 - 1:50,000, Fluorochrome: 10-20, Immunochemistry: 1:1,000 - 1:5,000, Western Blot: 1:2,000 - 1:10,000



WB - Antibody for the detection of FLAG Biotin Conjugated