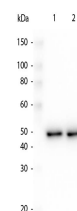


Product Datasheet

Antibody for the detection of conjugated proteins (RABBIT) Antibody Peroxidase Conjugated GRP4011

Description	Antibody for the detection of conjugated proteins (RABBIT) Antibody Peroxidase Conjugated
Species/Host	Rabbit
Reactivity	Protein
Conjugation	HRP
Tested Applications	ELISA, IHC-P, WB
Form/Appearance	0.02 M Potassium Phosphate, 0.15 M Sodium Chloride, pH 7.2
Concentration	1.0 mg/mL
Note	For research use only.
Isotype	IgG
Clonality	Polyclonal
Entrez	1215660
Dilution Range	ELISA: 1:20,000,Immunochemistry: 1:500 - 1:2,000,Western Blot: 1:2,000 - 1:5,000



WB - DYKDDDDK
Antibody same
epitope as Sigma's
Anti-FLAG
HRP Conjugated