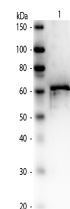


Product Datasheet

BOVINE ALBUMIN (RABBIT) Antibody (BSA) GRP1687

Species/Host	Rabbit
Reactivity	Bovine
Conjugation	Unconjugated
Tested Applications	ELISA, IHC-P, WB
Form/Appearance	0.02 M Potassium Phosphate, 0.15 M Sodium Chloride, pH 7.2
Concentration	85 mg/mL
Note	For research use only.
Isotype	Antiserum
Clonality	Polyclonal
Source	Anti-Bovine Serum Albumin antibody was produced by repeated immunizations with Bovine Serum Albumin.
Uniprot ID	P02769
Entrez	1215660
Dilution Range	ELISA: 1:20,000 - 1:100,000,Immunochemistry: 1:1,000 - 1:5,000,Western Blot: 1:2,000 - 1:10,000
Application Notes	Anti-Albumin antibody is suitable for western blotting, IHC and ELISA. The antibody may be suitable for other applications, although no supporting data is available.



WB - Bovine Serum
Albumin
Antibody BSA