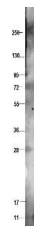


## Product Datasheet

### Bovine CXCL10 (Rabbit) Antibody GRP2793

<b>Description</b>	Anti-Bovine CXCL10 (Rabbit) Antibody
<b>Species/Host</b>	Rabbit
<b>Reactivity</b>	Bovine, Sheep, Goat
<b>Conjugation</b>	Unconjugated
<b>Tested Applications</b>	ELISA, WB
<b>Form/Appearance</b>	0.02 M Potassium Phosphate, 0.15 M Sodium Chloride, pH 7.2
<b>Concentration</b>	1.17 mg/mL
<b>Note</b>	For research use only.
<b>Isotype</b>	IgG
<b>Clonality</b>	Polyclonal
<b>Source</b>	This protein-A purified antibody was prepared from whole rabbit serum produced by repeated immunizations with a recombinant protein raised in yeast, corresponding to the 83 amino acids of the mature bovine CXCL10 protein.
<b>Uniprot ID</b>	<a href="#">Q2KIQ8</a>
<b>Entrez</b>	<a href="#">22724</a>
<b>Dilution Range</b>	ELISA: 1:10,000,Western Blot: 1 µg /mL



Anti-Bovine CXCL10  
Antibody -  
Western Blot