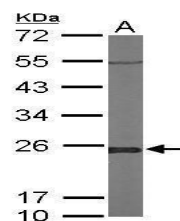


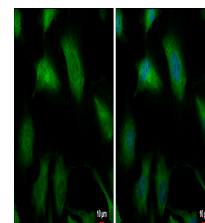
Product Datasheet

Glyoxalase I antibody [N1C3] GRP40

Description	The enzyme encoded by this gene is responsible for the catalysis and formation of S-lactoyl-glutathione from methylglyoxal condensation and reduced glutathione. Glyoxalase I is linked to HLA and is localized to 6p21.3-p21.1, between HLA and the centromere. [provided by RefSeq, Jul 2008]
Species/Host	Rabbit
Reactivity	Human, Mouse
Conjugation	Unconjugated
Tested Applications	ICC, IF, IHC-P, WB
Immunogen	Recombinant protein encompassing a sequence within the center region of human Glyoxalase I. The exact sequence is proprietary
Form/Appearance	Liquid: 1XPBS, 20% Glycerol (pH7). 0.025% ProClin 300 was added as a preservative.
Concentration	1 mg/ml
Storage	Store as concentrated solution. Centrifuge briefly prior to opening vial. For short-term storage (1-2 weeks), store at 4°C. For long-term storage, aliquot and store at -20°C or below. Avoid multiple freeze-thaw cycles.
Note	For research use only.
Isotype	IgG
Clonality	Polyclonal
Purity	Purified by antigen-affinity chromatography.
Uniprot ID	Q04760
Entrez	2739
Dilution Range	WB: 1:500-1:3000, ICC: 1:100-1:1000, IHC-P: 1:100-1:1000



Sample (50 µg of whole cell lysate) A: Mouse brain 12% SDS PAGE GRP492 diluted at 1:1000 The HRP-conjugated anti-rabbit IgG antibody was used to detect the primary antibody.



Glyoxalase I antibody [N1C3] detects Glyoxalase I protein by immunofluorescent analysis. Sample: HeLa cells were fixed in 4% paraformaldehyde at RT for 15 min. Green: Glyoxalase I protein stained by Glyoxalase I antibody [N1C3] (GRP)