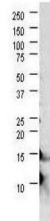


Product Datasheet

Bovine IL-21 (RABBIT) Antibody GRP2338

Description	Anti-Bovine IL-21 (RABBIT) Antibody
Species/Host	Rabbit
Reactivity	Pig, Bovine, Horse
Conjugation	Unconjugated
Tested Applications	ELISA, WB
Form/Appearance	0.02 M Potassium Phosphate, 0.15 M Sodium Chloride, pH 7.2
Concentration	1.0 mg/mL
Note	For research use only.
Isotype	IgG
Clonality	Polyclonal
Source	This protein-A purified antibody was prepared from whole rabbit serum produced by repeated immunizations with a recombinant protein raised in yeast, corresponding to amino acid residues 24-152 of bovine IL-21 protein.
Uniprot ID	Q76LU5
Entrez	8452
Dilution Range	ELISA: 1:6,000, Western Blot: 1 µg /mL



Anti-bovine IL-21 Antibody
Western Blot