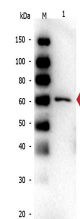


Product Datasheet

Bovine Serum Albumin (MOUSE) Monoclonal Antibody (BSA) GRP2789

Description	Anti-Bovine Serum Albumin (MOUSE) Monoclonal Antibody (BSA)
Species/Host	Mouse
Reactivity	Bovine
Conjugation	Unconjugated
Tested Applications	ELISA, IHC-P, IP, WB
Form/Appearance	0.02 M Potassium Phosphate, 0.15 M Sodium Chloride, pH 7.2
Concentration	1.0 mg/mL
Note	For research use only.
Isotype	IgG1
Clonality	Monoclonal
Source	Anti-Bovine Serum Albumin antibody was produced by repeated immunizations of balb/c mice with bovine serum albumin.
Clone ID	5F9
Uniprot ID	P02769
Entrez	890
Dilution Range	ELISA: 1:120,000,Immunochemistry: 1:1,000 - 1:5,000,Immunoprecipitation: 1:100,Western Blot: 1:2,000 - 1:10,000

Application Notes Anti-ALB antibody is suitable for western blotting and ELISA. The antibody may be suitable for other applications, although no supporting data is available.



Mouse anti-BSA WB