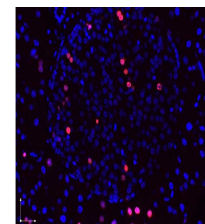


Product Datasheet

BrdU (RABBIT) Antibody GRP3681

Description	Anti-BrdU (RABBIT) Antibody
Species/Host	Rabbit
Reactivity	Other
Conjugation	Unconjugated
Tested Applications	ELISA, FC, IF, IHC-P, IP, WB
Form/Appearance	0.02 M Potassium Phosphate, 0.15 M Sodium Chloride, pH 7.2
Concentration	1.1 mg/mL
Note	For research use only.
Isotype	IgG
Clonality	Polyclonal
Purity	Anti-BrdU Antibody was affinity purified from monospecific antiserum by immunoaffinity chromatography.
Source	Anti-BrdU affinity purified antibody was purified from monospecific rabbit antiserum prepared via repeated immunizations with BromodeoxyUridine-KLH.
Entrez	905
Dilution Range	ELISA: 1:2000-1:10,000, Flow Cytometry: 1:50-1:100, Immunochromatography: 1:100-1:500, IF Microscopy: 1:500, Immunoprecipitation: User Optimized, Western Blot: User Optimized



Immunofluorescence
Microscopy