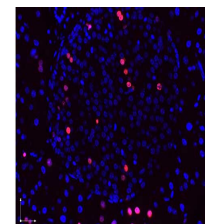


Product Datasheet

BrdU (RABBIT) Antibody GRP3682

Description	Anti-BrdU (RABBIT) Antibody
Species/Host	Rabbit
Reactivity	Other
Conjugation	Unconjugated
Tested Applications	ELISA, FC, IF, IHC-P, IP, WB
Form/Appearance	0.02 M Potassium Phosphate, 0.15 M Sodium Chloride, pH 7.2
Concentration	1.1 mg/mL
Storage	Store BrdU Antibody at -20° C or below prior to opening. This vial contains a relatively low volume of reagent (25 µL). To minimize loss of volume dilute 1:10 by adding 225 µL of the buffer stated above directly to the vial. Recap, mix thoroughly and briefly centrifuge to collect the volume at the bottom of the vial. Use this intermediate dilution when calculating final dilutions as recommended below. Store the vial at -20°C or below after dilution. Avoid cycles of freezing and thawing.
Note	For research use only.
Isotype	IgG
Clonality	Polyclonal
Purity	BrdU Antibody was affinity purified from monospecific antiserum by immunoaffinity chromatography.
Source	Anti-BrdU affinity purified antibody was purified from monospecific rabbit antiserum prepared via repeated immunizations with BromodeoxyUridine-KLH.
Entrez	905
Dilution Range	ELISA: 1:2000-1:10,000, Flow Cytometry: 1:50-1:100, Immunochemistry: 1:100-1:500, IF Microscopy: 1:500, Immunoprecipitation: User Optimized, Western Blot: User Optimized



Immunofluorescence
Microscopy