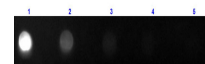


Product Datasheet

CAT IgG F(c) (GOAT) Antibody Fluorescein Conjugated GRP4153

| | |
|----------------------------|-------------------------------------------------------------------------------------------------------------------|
| Description | Anti-CAT IgG F(c) (GOAT) Antibody Fluorescein Conjugated |
| Species/Host | Goat |
| Reactivity | Cat |
| Conjugation | FITC |
| Tested Applications | FC, IF, IHC-P |
| Form/Appearance | 0.02 M Potassium Phosphate, 0.15 M Sodium Chloride, pH 7.2 |
| Concentration | 2.0 mg/mL |
| Note | For research use only. |
| Isotype | IgG |
| Clonality | Polyclonal |
| Source | Cat IgG F(c) fragment |
| Entrez | 2549 |
| Dilution Range | FLISA: 1:10,000 - 1:50,000, Flow Cytometry: 1:500 - 1:2,500, Fluorochrome: 2.75, IF Microscopy: 1:1,000 - 1:5,000 |



Dot Blot of Anti-CAT IgG
F(c)
(GOAT) Antibody
Fluorescein
Conjugated