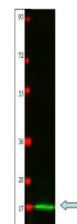


Product Datasheet

Cat IL-2 (RABBIT) Antibody GRP2820

Description	Anti-Cat IL-2 (RABBIT) Antibody
Species/Host	Rabbit
Reactivity	Cat
Conjugation	Unconjugated
Tested Applications	ELISA, WB
Form/Appearance	0.02 M Potassium Phosphate, 0.15 M Sodium Chloride, pH 7.2
Concentration	1.0 mg/mL
Note	For research use only.
Isotype	IgG
Clonality	Polyclonal
Source	This protein A purified antibody was prepared from whole rabbit serum produced by repeated immunizations with a recombinant protein raised in yeast corresponding to 134 amino acids of mature cat IL-2.
Uniprot ID	Q07885
Entrez	2737
Dilution Range	ELISA: 1:20,000,Western Blot: 1:500-1:2,000



Anti-Cat IL-2 Antibody -
Western Blot