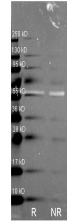


## Product Datasheet

### CATALASE (Bovine Liver) (RABBIT) Antibody GRP2264

|                            |   |
|----------------------------|---|
| <b>Description</b>         | Anti-CATALASE (Bovine Liver) (RABBIT) Antibody  |
| <b>Species/Host</b>        | Rabbit  |
| <b>Reactivity</b>          | Human, Mouse, Rat, Bovine, Sheep  |
| <b>Conjugation</b>         | Unconjugated  |
| <b>Tested Applications</b> | ELISA, IHC-P, WB  |
| <b>Form/Appearance</b>     | 0.02 M Potassium Phosphate, 0.15 M Sodium Chloride, pH 7.2  |
| <b>Concentration</b>       | 1.0 mg/mL   |
| <b>Note</b>                | For research use only.  |
| <b>Isotype</b>             | IgG   |
| <b>Clonality</b>           | Polyclonal  |
| <b>Source</b>              | Catalase [Bovine Liver]   |
| <b>Uniprot ID</b>          | <b>P00432</b>   |
| <b>Entrez</b>              | <b>8985276</b>  |
| <b>Dilution Range</b>      | ELISA: 1:20,000,Immunochemistry: User Optimized,Western Blot:<br>1:10,000 - 1:50,000  |
| <b>Application Notes</b>   | Anti-Catalase is suitable for use in ELISA, western blot, and immunohistochemistry. Specific conditions for reactivity should be optimized by the end user. |



Anti Catalase Polyclonal  
Antibody-Western blot