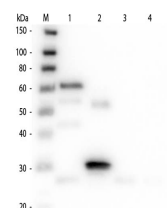


Product Datasheet

CHICKEN IgG (H&L) (DONKEY) Antibody (Min X Bv Gt GP Ham Hs Hu Ms Rb Rt & Sh Serum Proteins) GRP4233

| | |
|----------------------------|---|
| Description | Anti-CHICKEN IgG (H&L) (DONKEY) Antibody (Min X Bv Gt GP Ham Hs Hu Ms Rb Rt & Sh Serum Proteins) |
| Species/Host | Donkey |
| Reactivity | Chicken |
| Conjugation | Unconjugated |
| Tested Applications | ELISA, IHC-P, WB |
| Form/Appearance | 0.02 M Potassium Phosphate, 0.15 M Sodium Chloride, pH 7.2 |
| Concentration | 1.12 mg/mL |
| Note | For research use only. |
| Isotype | IgG |
| Clonality | Polyclonal |
| Source | Chicken IgG whole molecule |
| Entrez | 6960048 |
| Dilution Range | ELISA: 1:20,000 - 1:100,000, Immunochemistry: 1:1,000 - 1:5,000, Western Blot: 1:2,000 - 1:10,000 |
| Application Notes | Anti-Chicken IgG (H&L) is suitable for use in immunoelectrophoresis, western-blot, competitive western-blot, ELISA and competitive ELISA assays. Specific conditions for reactivity and signal detection should be optimized by the end user. |



Western Blot of
Anti-Chicken
IgG (H&L) (DONKEY)
Antibody
(Min X Bv Gt GP Ham Hs
Hu Ms
Rb Rt & Sh Serum
Proteins)