

Product Datasheet

CHICKEN IgG (H&L) (DONKEY) Antibody Alkaline Phosphatase Conjugated (Min X Bv Gt GP Ham Hs Hu Ms Rb Rt & Sh Serum Proteins) GRP4236

Description Anti-CHICKEN IgG (H&L) (DONKEY) Antibody Alkaline Phosphatase Conjugated (Min X Bv Gt GP Ham Hs Hu Ms Rb Rt & Sh Serum Proteins)

Species/Host Donkey

Reactivity Chicken

Conjugation AP

Tested Applications ELISA, IHC-P, WB

Form/Appearance 0.05 M Tris Chloride, 0.15M Sodium Chloride, 0.001M Magnesium Chloride, 0.0001M Zinc Chloride, 50% (v/v) Glycerol; pH 8.0

Concentration 1.0 mg/mL

Storage Store vial at 4 °C before opening. DO NOT FREEZE. This product is stable at 4 °C as an undiluted liquid. Dilute only prior to immediate use. Freezing alkaline phosphatase conjugates will result in a substantial loss of enzymatic activity.

Note For research use only.

Isotype IgG

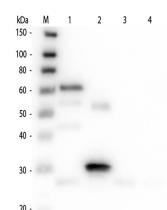
Clonality Polyclonal

Source Chicken IgG whole molecule

Entrez **6960048**

Dilution Range ELISA: 1:2,000 - 1:10,000, Immunochemistry: 1:200 - 1:1,000, Western Blot: 1:500 - 1:2,500

Application Notes Anti-Chicken IgG (H&L) antibody is suitable for immunoblotting (western or dot blot), ELISA, immunoelectron microscopy and immunohistochemistry as well as other antibody based enzymatic assays requiring lot-to-lot consistency.



Western Blot of
Anti-Chicken
IgG (H&L) (DONKEY)
Antibody
(Min X Bv Gt GP Ham Hs
Hu Ms
Rb Rt & Sh Serum
Proteins)