

## Product Datasheet

# CHICKEN IgG (H&L) (DONKEY) Antibody Biotin Conjugated (Min X Bv Gt GP Ham Hs Hu Ms Rb Rt & Sh Serum Proteins) GRP4237

**Description** Anti-CHICKEN IgG (H&L) (DONKEY) Antibody Biotin Conjugated (Min X Bv Gt GP Ham Hs Hu Ms Rb Rt & Sh Serum Proteins)

**Species/Host** Donkey

**Reactivity** Chicken

**Conjugation** Biotin

**Tested Applications** ELISA, IHC-P, WB

**Form/Appearance** 0.02 M Potassium Phosphate, 0.15 M Sodium Chloride, pH 7.2

**Concentration** 1.0 mg/mL

**Note** For research use only.

**Isotype** IgG

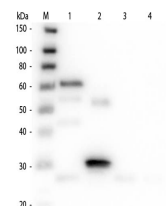
**Clonality** Polyclonal

**Source** Chicken IgG whole molecule

**Entrez** [100339469](#)

**Dilution Range** ELISA: 1:10,000 - 1:50,000, Immunochemistry: 1:1,000 - 1:5,000, Western Blot: 1:2,000 - 1:10,000

**Application Notes** Anti-Chicken IgG antibody is suitable for ELISA, Western Blot and Immunohistochemistry applications. Specific conditions for reactivity should be optimized by end user.



Western Blot of Anti-Chicken IgG (H&L) (DONKEY) Antibody (Min X Bv Gt GP Ham Hs Hu Ms Rb Rt & Sh Serum Proteins)