

Product Datasheet

CHICKEN IgG (H&L) (DONKEY) Antibody Peroxidase Conjugated (Min X Bv Gt GP Ham Hs Hu Ms Rb Rt & Sh Serum Proteins) GRP4235

Description Anti-CHICKEN IgG (H&L) (DONKEY) Antibody Peroxidase Conjugated (Min X Bv Gt GP Ham Hs Hu Ms Rb Rt & Sh Serum Proteins)

Species/Host Donkey

Reactivity Chicken

Conjugation HRP

Tested Applications ELISA, IHC-P, WB

Form/Appearance 0.02 M Potassium Phosphate, 0.15 M Sodium Chloride, pH 7.2

Concentration 1.0 mg/mL

Note For research use only.

Isotype IgG

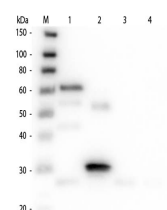
Clonality Polyclonal

Source Chicken IgG whole molecule

Entrez [100339469](#)

Dilution Range ELISA: 1:65,000, Immunochemistry: 1:500 - 1:2,500, Western Blot: 1:1,000 - 1:5,000

Application Notes Anti-Chicken IgG (H&L) is suitable for use in immunoelectrophoresis, western-blot, competitive western-blot, ELISA and competitive ELISA assays. Specific conditions for reactivity and signal detection should be optimized by the end user.



Western Blot of Anti-Chicken IgG (H&L) (DONKEY) Antibody (Min X Bv Gt GP Ham Hs Hu Ms Rb Rt & Sh Serum Proteins)