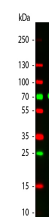


Product Datasheet

CHICKEN IgG (H&L) (DONKEY) Antibody Rhodamine Conjugated (Min X Bv Gt GP Ham Hs Hu Ms Rb Rt & Sh Serum Proteins) GRP4232

Description	Anti-CHICKEN IgG (H&L) (DONKEY) Antibody Rhodamine Conjugated (Min X Bv Gt GP Ham Hs Hu Ms Rb Rt & Sh Serum Proteins)
Species/Host	Donkey
Reactivity	Chicken
Conjugation	Rhodamine (TRITC)
Tested Applications	IF, IHC-P
Form/Appearance	0.02 M Potassium Phosphate, 0.15 M Sodium Chloride, pH 7.2
Concentration	1.0 mg/mL
Note	For research use only.
Isotype	IgG
Clonality	Polyclonal
Source	Chicken IgG whole molecule
Entrez	100339469
Dilution Range	FLISA: 1:10,000 - 1:50,000, Fluorochrome: 3.1, IF Microscopy: 1:1,000 - 1:5,000



WB - Chicken IgG (H&L)
Antibody Rhodamine
Conjugated
Pre-Adsorbed