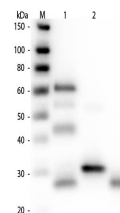


Product Datasheet

CHICKEN IgG (H&L) (RABBIT) Antibody Fluorescein Conjugated GRP4215

Description	Anti-CHICKEN IgG (H&L) (RABBIT) Antibody Fluorescein Conjugated
Species/Host	Rabbit
Conjugation	FITC
Tested Applications	FC, IF, IHC-P
Form/Appearance	0.02 M Potassium Phosphate, 0.15 M Sodium Chloride, pH 7.2
Concentration	1.5 mg/mL
Note	For research use only.
Isotype	IgG
Clonality	Polyclonal
Source	Chicken IgG whole molecule
Entrez	3047
Dilution Range	FLISA: 1:10,000 - 1:50,000, Flow Cytometry: 1:500 - 1:2,500, Fluorochrome: 3.0, IF Microscopy: 1:1,000 - 1:5,000

Application Notes Suitable for immunomicroscopy and flow cytometry or FACS analysis as well as other antibody based fluorescent assays requiring extremely low background levels, absence of F(c) mediated binding, lot-to-lot consistency, high titer and specificity.



Western Blot of
Anti-Chicken
IgG (H&L) (RABBIT)
Antibody